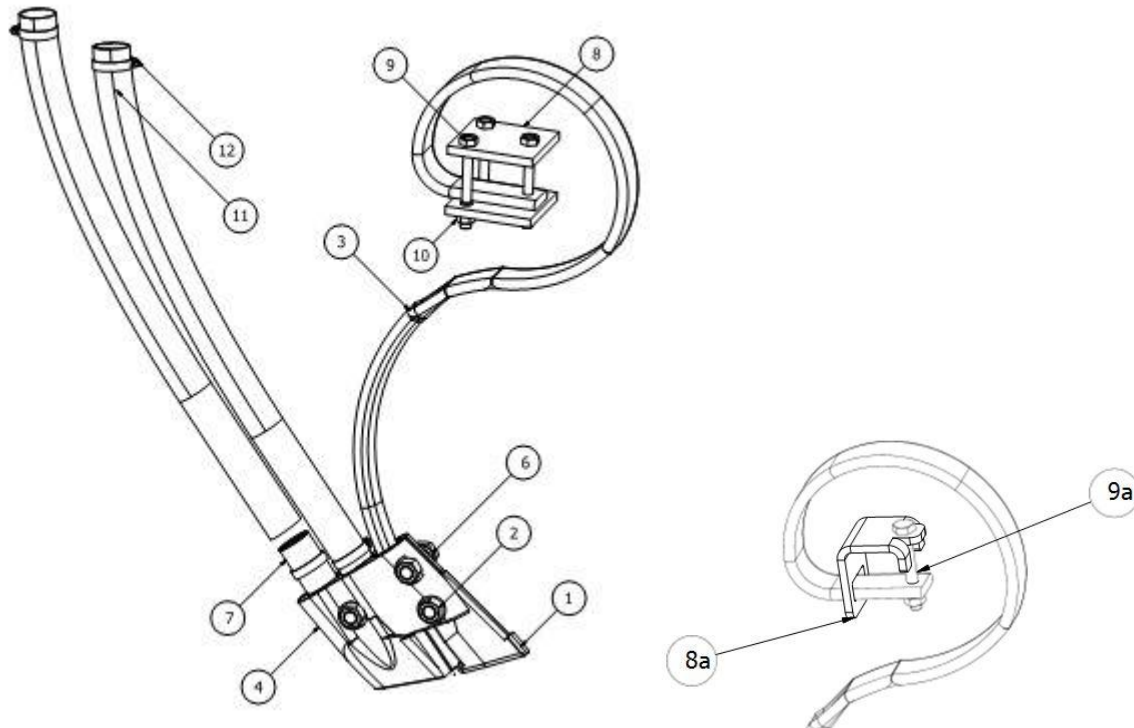


TYNE ASSEMBLY



Part Number	Description	Single Hopper	Double Hopper
1 DD6000.000	Bolt on Tip for 3 Piece Boots	(As required)	
2 DD6006.000	BOLT SPECIAL	1	
3 DD6003.000	STANDARD TYNE	(as required)	
3 DD6003.100	HD 45mm TYNE	(as required)	
4 DD6001.000	Cast A&B Housings for 3 Piece Tip (Pair)	(as required)	
4 DD6001.100	Cast C&D Housings for 3 Piece Tip (Pair)	(as required)	
4 DD6001.101	Cast C+ & D+ Housings for 3 Piece Tip (Pair)	(as required)	
4 DD6002.000	A & B Housing Complete Kit Including Tip, 2 x Tubes and all Bolts (UniDrill)		
6 1MHC10035G	M10x35 Bolt For A + B housings	1	
1NNM10	M10 Nyloc Nut	A/R	
6 1MHC12035G	M12x35 Bolt for C + D housings	A/R	
6a 1MHC12040G	M12x40 Bolt for C + D housings	A/R	
1NNm12	M12 Nyloc Nut	A/R	
7 DD6007.000	EXTENSION TUBE	1	2
8 DD6008.000	Discontinued use DD6008.001 & 1MHC12090G & 1WS12G		

TYNE ASSEMBLY

8a	DD6008.001	1-hole CLAMP STANDARD TYNE	A/R	
8	DD6008.100	Discontinued use DD6008.101 & 1MHC12090G & 1WS12G		
8a	DD6008.101	1-hole CLAMP BIG TYNE (HD Tyne)	A/R	
9a	1MHC12100G	M12x100Bolt Gal with spring washer	3	
10	1NNM10	M10 Nyloc Nut	3	
11	DD6011.000	Use DD9019.000 dropper hose 38mm (per metre)	1	2
12	DD6012.000	Use 1HCSS24 38mm S/Steel hose clip	2	4
13	68TEPA06.1	TIP MOUNTING KIT(as required)	1	1
n/s	DD6013.000	Welded Tip Single Curved fits DD6003.000 standard tyne	(As required)	
n/s	DD6013.100	Welded Tip Single Straight fits DD6003.000 standard tyne	(As required)	
n/s	DD6014.000	Welded Tip Double Curved fits DD6003.000 standard tyne		(As required)
n/s	DD6014.100	Welded Tip Double Straight fits DD6003.000 standard tyne		(As required)
	DD6015.005	Welded Tip Retaining Bolt 10 x 45 HT (Special with 17mm Head)		